



# 2026-2029

# UNIFORM POLICY

# UNIFORM AND DRESS CODE

The wearing of the College uniform is compulsory for all students and applies during school hours, and while travelling to and from school. Full uniform must be worn on all excursions and school activities unless otherwise stipulated. The College has a gender neutral uniform which enables an inclusive and supportive College community.

**It is essential that parents support the College rules in regards to acceptable dress and appearance as this does have a direct effect on the discipline and tone of the school and the public perception of our students.**

The College requires all students to wear the correct uniform as outlined below:



## Compulsory Uniform

- Grey tailored trousers or tailored grey shorts (button and zip flat front with two side pockets and a back hip pocket, minimum knee length)
- White College collared shirt with logo
- Patterson River dress (minimum mid-thigh length)
- Skirt (minimum length below the knee) (Black tights may be worn with skirt (no leggings))
- Navy Woollen Jumper with College logo and/or College Jacket (with contrast piping)
- Plain white or black socks (no logo or stripe)
- Black polishable lace up school shoes with a heel (not runner or canvas style)

## PE Uniform

- Patterson River PE /sport top
- Plain navy sport shorts (no bike shorts)
- Runners
- Patterson River logo tracksuit pants (for PE/Sport only) (optional)
- Patterson River rugby jumper (for PE/Sport only) (optional)

The PE uniform is compulsory for all Physical Education classes. Students may wear the full PE uniform home if class finishes Period 6. All other classes will change to full school uniform. The specified PE uniform is to be worn for all sports excursions.

## Optional

- Patterson River navy cap (with eel logo) to be worn outside only
- Patterson River navy scarf with logo
- Patterson River tie with logo
- Year 12 Only – College bomber jacket
- Patterson River Bag

### **Hair**

- Hair styles must be neat and tidy and away from the face.
- Long hair should be tied back where appropriate for safety reasons, especially in classes such as Science, Technology, PE and Sport.
- Hair colour must be in natural tones and extreme hairstyles (e.g. Mohawks, dreadlocks, rat tails, brightly coloured etc.) are not allowed
- Facial hair must be neat and well-trimmed

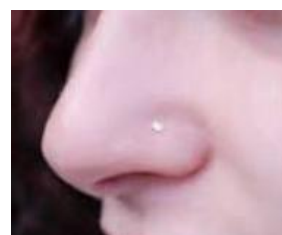
### **Make Up**

- Makeup must not be obvious or excessive. Coloured nail polish is not permitted. Nails should be of a length that does not impact on capacity to complete school activities in a safe manner.

### **Jewellery**

Jewellery is not encouraged, however if minimal and unobtrusive, the following items are permitted:

- A wristwatch may be worn
- Small simple studs or sleepers in pierced ears (maximum of 2). Ear spacers are not permitted.
- A necklace covered by clothes
- A discreet, small stud for a nose piercing (one only, no bigger than 1mm in diameter). No other facial piercings permitted.
- Large sleepers or hoops are not permitted for any piercings as they present an increased safety risk. The school does not accept the responsibility for the loss of jewellery or infection caused by jewellery.
- A staff member may confiscate any jewellery deemed to go against the uniform policy for later collection. Jewellery must be removed for Sport, PE and some practical classes for safety considerations.



### **Tattoos**

- Tattoos are not to be visible and must be covered at all times.

### **Hats and Sunscreen**

- Students are encouraged to wear their hat for outdoor activities, including at recess and lunchtime.
- Parents are asked to ensure that their student is SunSmart and is prepared for all outdoor activities- including applying sunscreen (extra supplies are available at school), wearing the approved College cap and wearing clothing suitable for sun exposure.

Students with inappropriate facial piercings or extreme hair colours or styles will be sent home until they conform to school rules.

**PLEASE NOTE:** clothing worn under school uniform should be white without visible logos and should not be able to be seen under the correct uniform.

The following items are unacceptable to be worn:

- Elastic waisted pants / shorts
- Bike shorts for PE
- Yoga pants
- Current maroon PE polo shirt (for PE only)
- PE Rugby Jumper (for PE only)

## EXEMPTIONS

Legal grounds for an exemption exist when an aspect of the uniform policy:

- prevents students from being able to attend school or participate in school activities on the same terms as other students because of the personal characteristics referred to in human rights and anti-discrimination requirements
- offends a religious belief held by the student or parents/carers
- prevents students from complying with a requirement of their religious, ethnic or cultural background
- the student has a particular disability or health condition that requires a departure from the dress code
- the student or the parents/carers can demonstrate particular economic hardship that prevents them from complying with the dress code.

Date Implemented	28.01.22
Author	Adam Slater
Approved by	School Council
Date Reviewed	03.02.26
Responsible for Review	Adam Slater
Review Date	February 2029
References	Victorian Government Schools Policy Advisory Guide